

GRIP-ON RAISERS

THE GRIP-ON RAISERS ARE HIGHLY VERSATILE AND WORK WITH FURNITURE ON CASTORS OR ON LEGS.

KEY FEATURES

- Grips firmly onto castors or legs
- Increased reassurance and safety
- Lowest possible raise of 1 inch (2.5 cm)

The Grip-On Raisers use a unique 'doughnut' to grip on to the furniture meaning no tools are needed. There are three sizes to choose from.

The raiser becomes attached to the furniture without damaging it, giving increased safety over cone raisers and providing additional reassurance for the user.

The Grip-On raisers are provided as a set of four with a 3 inch (7.5cm) raise made up of individual 1 inch (2.5cm) sections. A raise height can be set as low as just 1 inch (2.5cm) or, by using two packs, can be set as high as 5 inch (12.5cm).

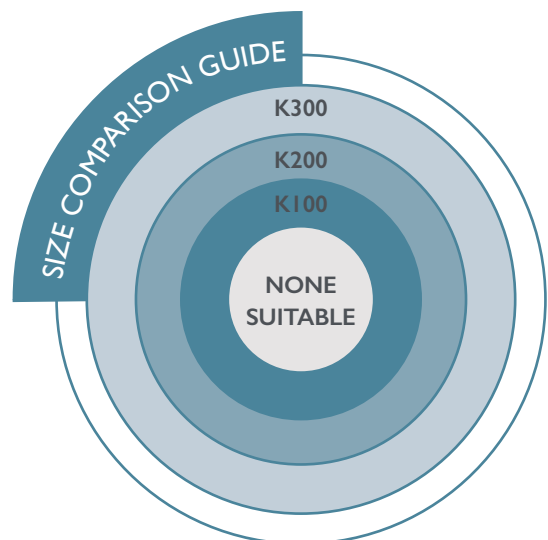
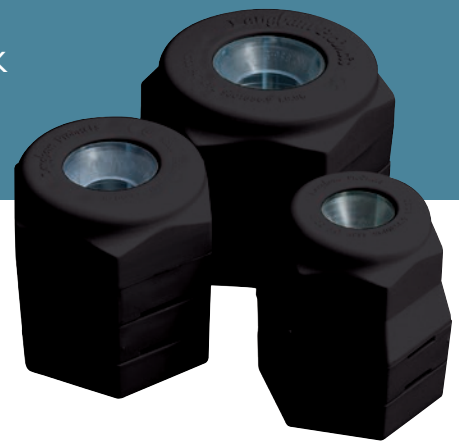
If in doubt, please contact our helpful team for advice.

IDEAL FOR: Chairs (except dining chairs), beds and sofas.

Do not move the furniture once raisers are fitted.



 **500KG** / 78 STONE / 1100 LBS



TO SELECT THE CORRECT SIZE

Please place the foot or castor over the guide above, or request a free Grip-On gauge from our office.

Minimum diameter: 3/4 inch (19mm)

LP/K100: Maximum diameter 1 1/4 inch (30mm)

LP/K200: Maximum diameter 1 3/4 inch (43mm)

LP/K300: Maximum diameter 2 1/4 inch (56mm)

FURNITURE
RAISERS



BATHROOM



SPECIALIST
BATHROOM



KITCHEN



OUTDOOR



BEDROOM

