



GORDON  
ELLIS  
& CO

# ASHBY LIFT

## OVAL, STRAIGHT & D-SHAPE



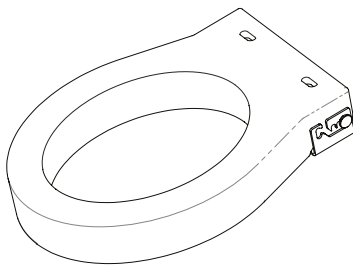
### INSTRUCTIONS FOR USE

en



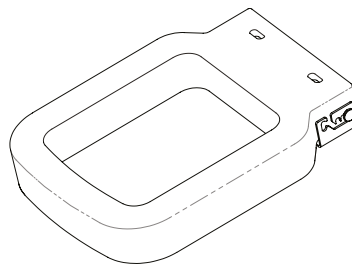
#### INSTRUCTIONS AVAILABLE ONLINE

[www.gordonellishealthcare.co.uk/ashby-lift-oval-toilet-raiser](http://www.gordonellishealthcare.co.uk/ashby-lift-oval-toilet-raiser)  
or Scan QR Code



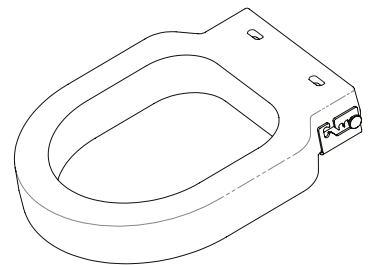
**66294**

ASHBY LIFT OVAL



**66394**

ASHBY LIFT STRAIGHT



**66494**

ASHBY LIFT D-SHAPE

EC REP

Advena Ltd.

Tower Business Centre, 2nd Floor, Tower Street, Swatar. MALTA. BKR 4013



Gordon Ellis & Co.

Trent Lane, Castle Donington, Derbys. UK. DE74 2AT

66294-1025-3-JA\_EN



GORDONELLISHEALTHCARE.CO.UK



**en** Accessible format available on request.  
**bg** Достъпен формат е наличен при поискване.  
**cs** Přístupný formát je k dispozici na vyžádání.  
**da** Tilgængeligt format fås efter anmodning.  
**de** Barrierefreies Format auf Anfrage erhältlich.  
**el** Διαθέσιμη προσβάσιμη μορφή κατόπιν αιτήματος.  
**es** Formato accesible disponible a petición.  
**et** Juurdepääsetav vorming on saadaval nõudmisel.  
**fi** Saavutettava versio saatavilla pyynnöstä.  
**fr** Format accessible disponible sur demande.  
**hr** Dostupan format na zahtjev.

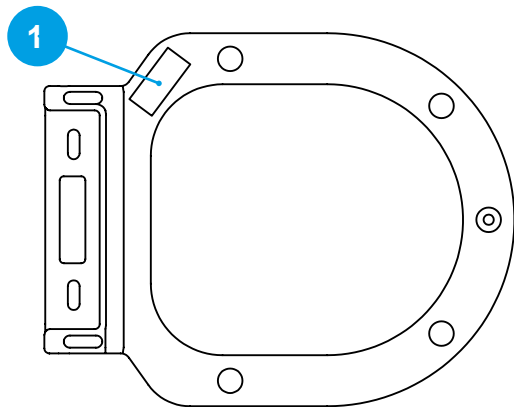
**hu** Hozzáférhető formátum kérésre elérhető.  
**it** Formato accessibile disponibile su richiesta.  
**lt** Prieinamas formatas pagal pareikalavimą.  
**lv** Pieejams pielāgots formāts pēc pieprasījuma.  
**nl** Toegankelijk formaat op verzoek beschikbaar.  
**no** Tilgjengelig format tilgjengelig på forespørsel.  
**pl** Dostępny format na życzenie.  
**pt** Formato acessível disponível mediante pedido.  
**ro** Format accesibil disponibil la cerere.  
**sk** Dostupný prístupný formát na požiadanie.  
**sl** Na zahtevo je na voljo dostopna oblika.  
**sv** Tillgängligt format finns på begäran.

1

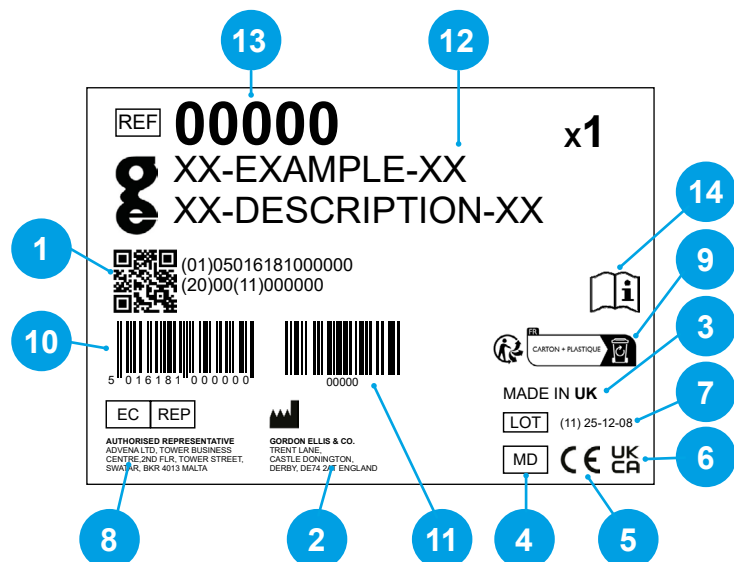
a.



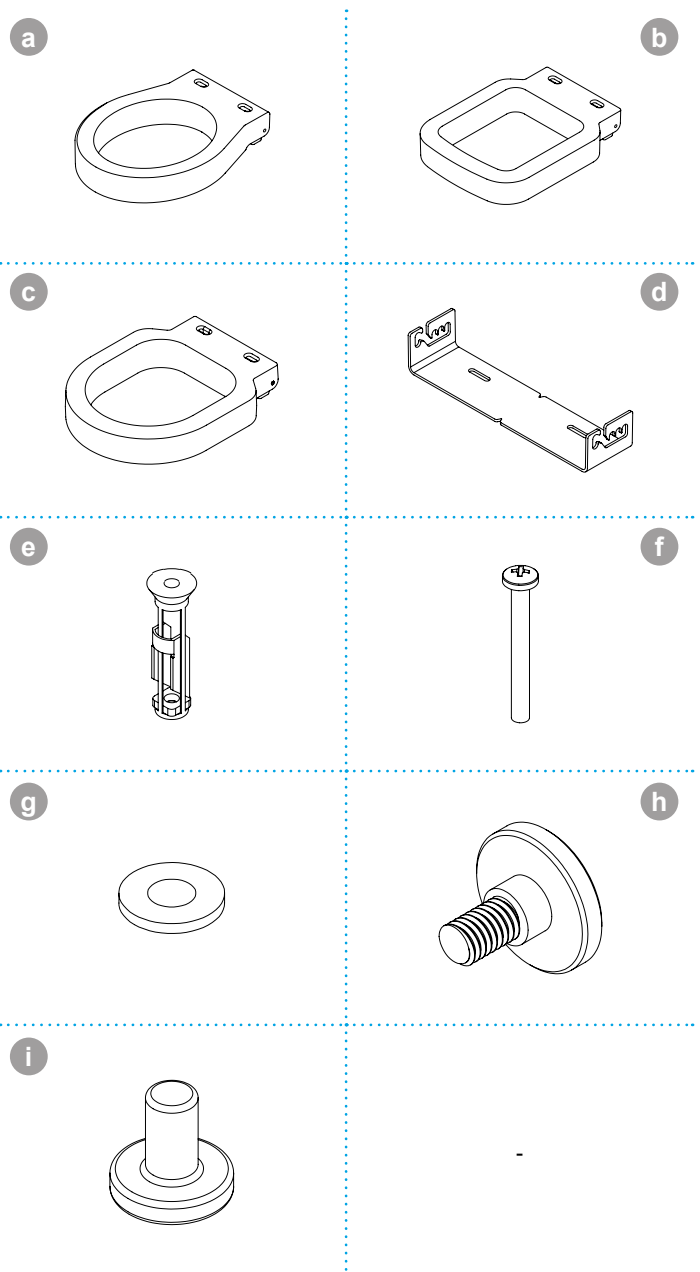
b.



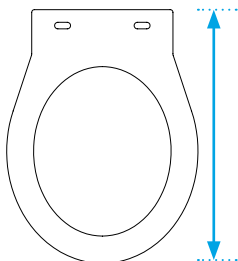
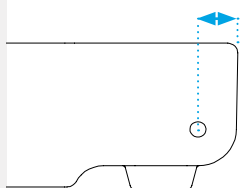
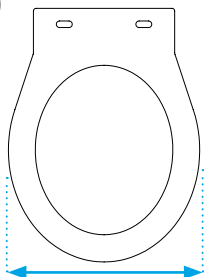

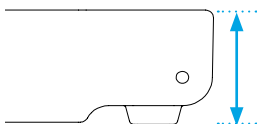
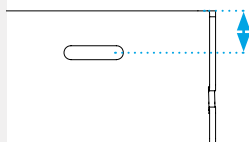
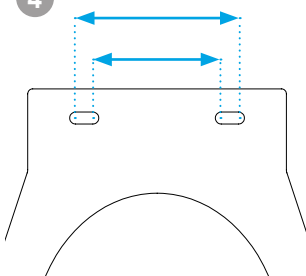

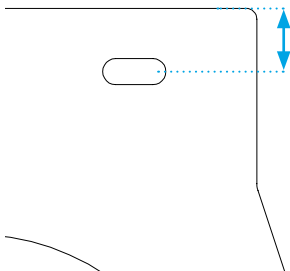
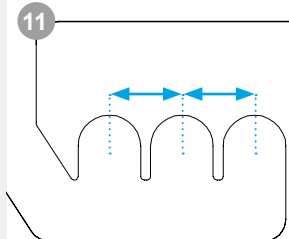
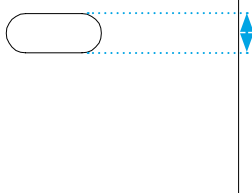

c.

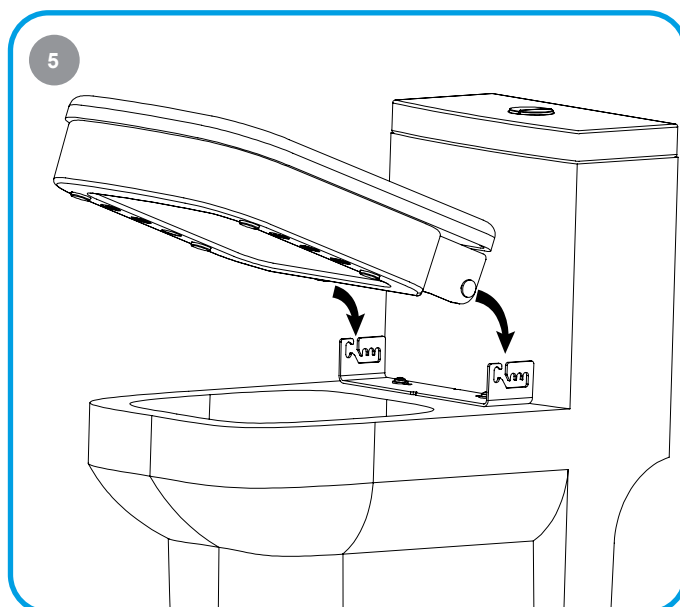
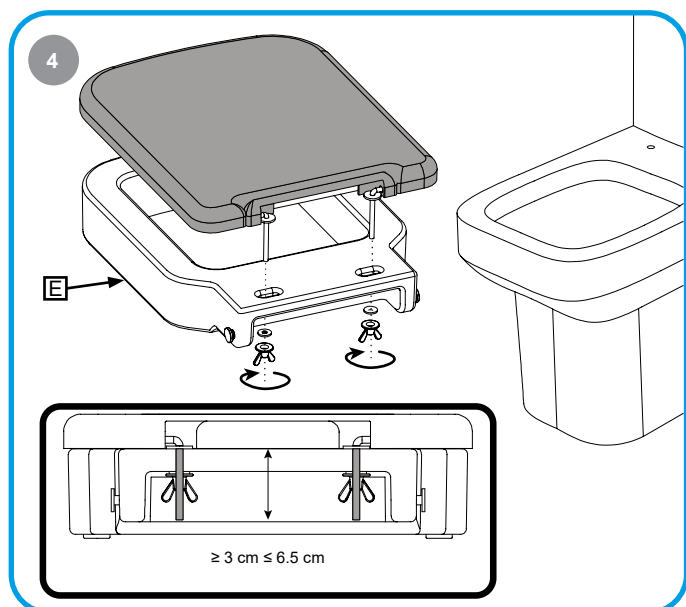
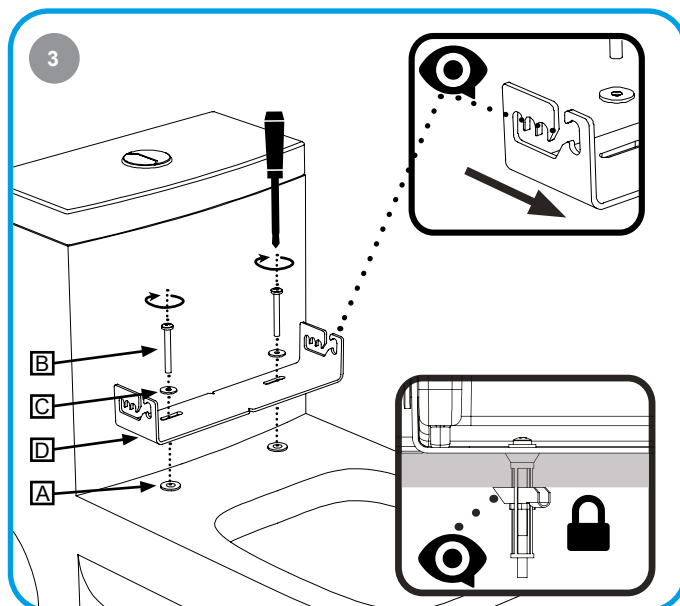
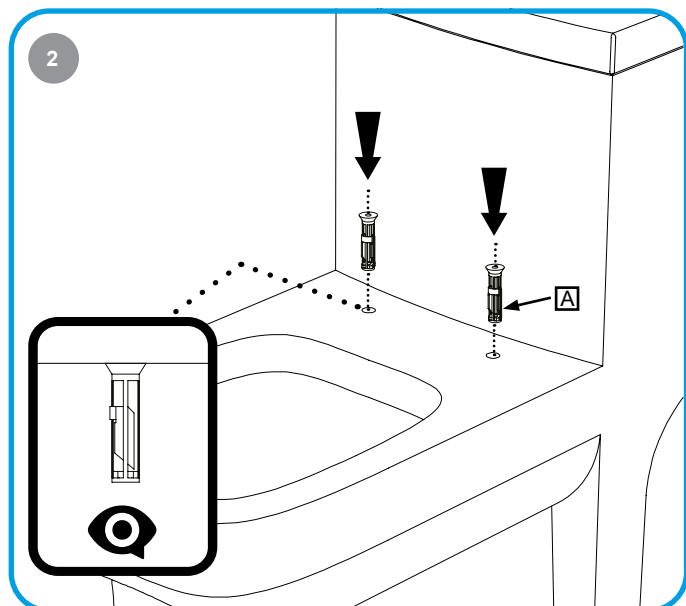
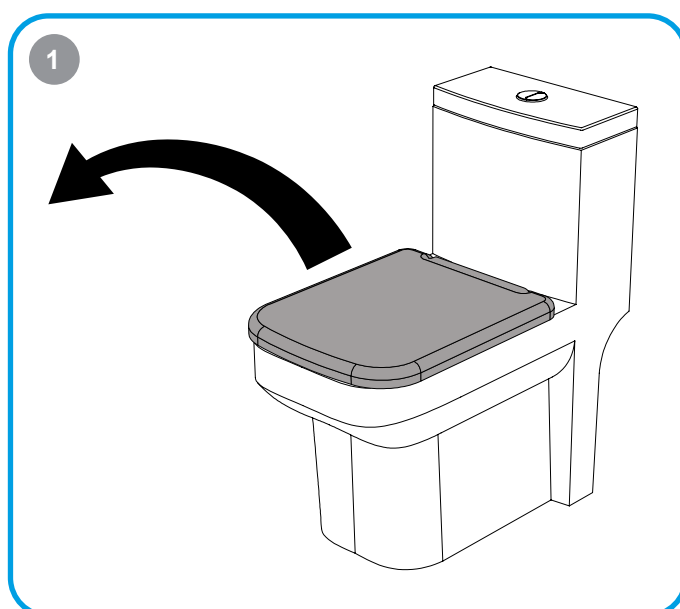
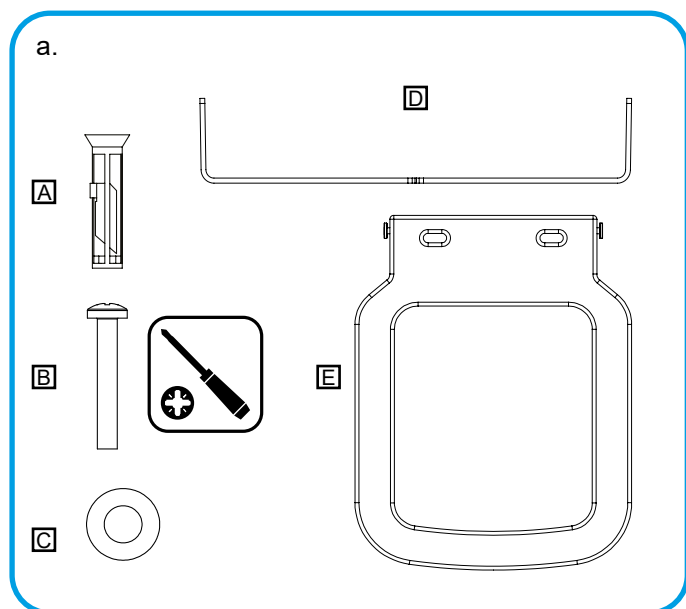


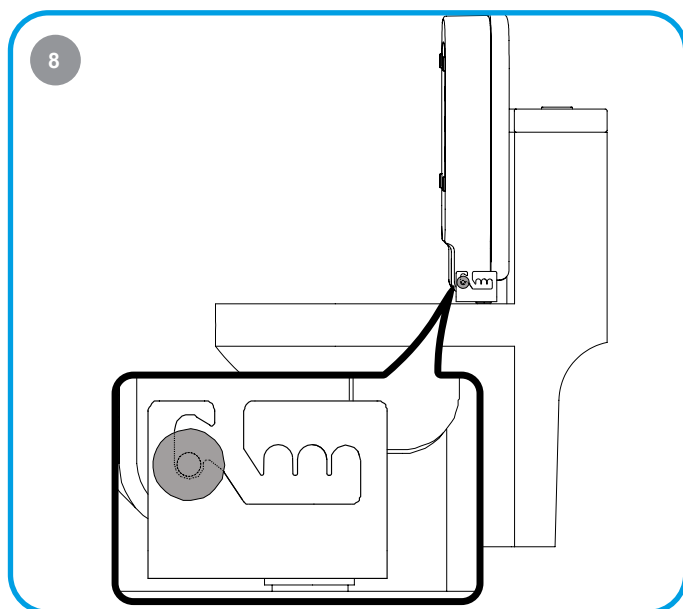
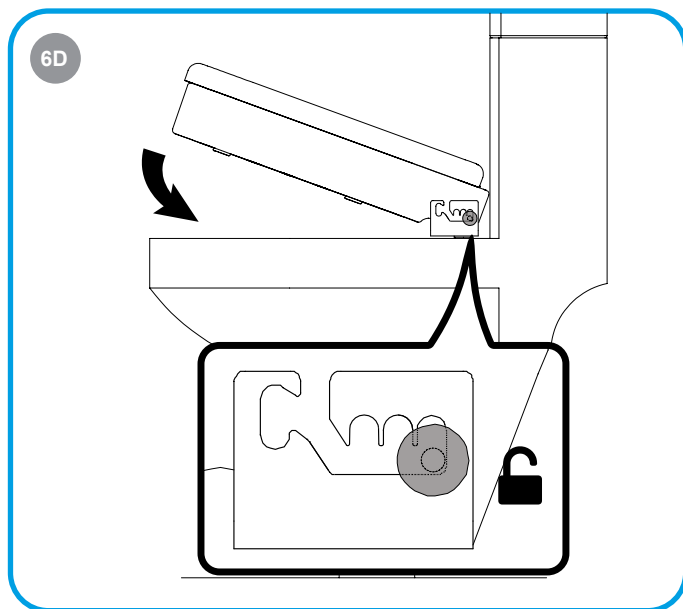
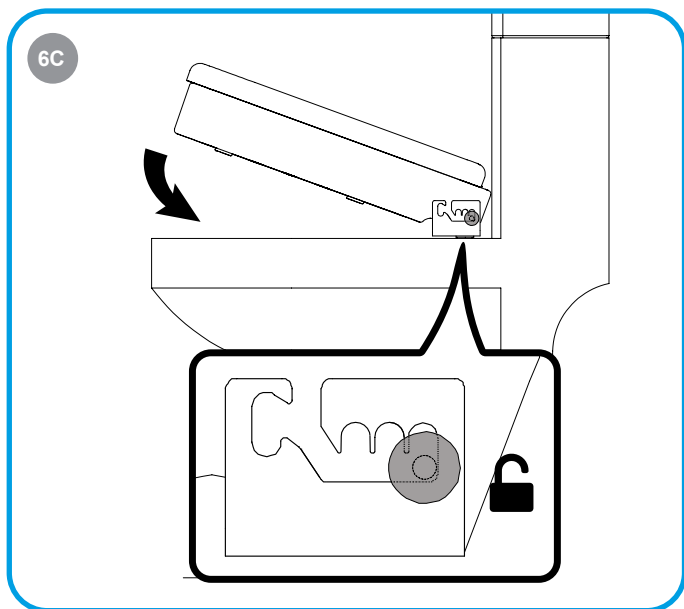
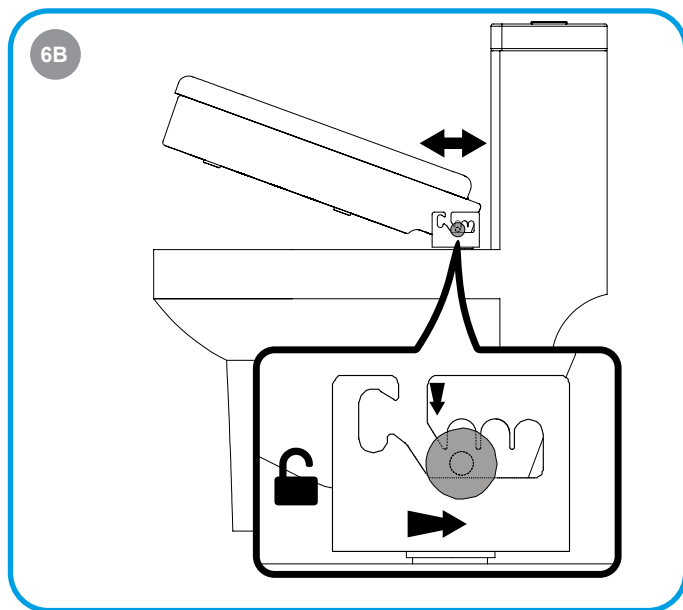
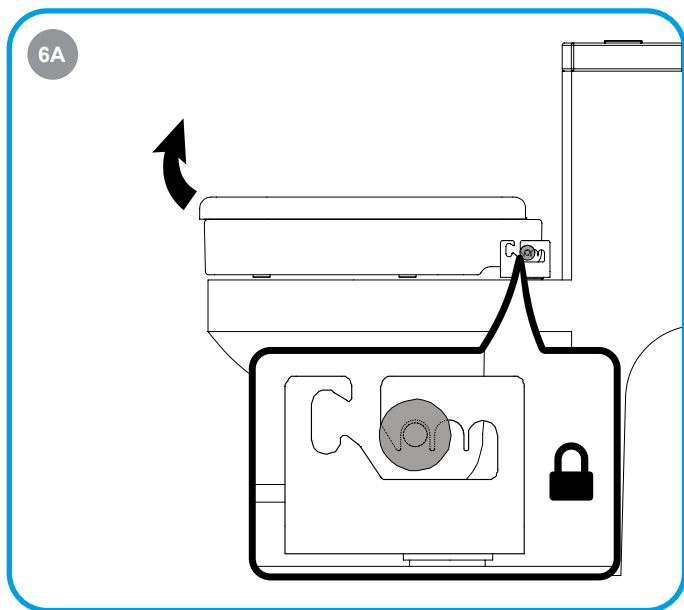
d.



e.

	66294	66394	66494		66294	66394	66494		
1		46.5 cm (18.3")	45.5 cm (17.9")	46 cm (18.1")	7		2 cm (0.8")	2 cm (0.8")	2 cm (0.8")
2		35.5 cm (14")	35 cm (13.8")	36.5 cm (14.4")	8		12.5-17 cm (4.9-6.7")	12.5-17 cm (4.9-6.7")	12.5-17 cm (4.9-6.7")
3		7.5 cm (3")	7.5 cm (3")	7.5 cm (3")	9		2 cm (0.8")	2 cm (0.8")	2 cm (0.8")
4		13-16.5 cm (5")	13-16.5 cm (5")	13-16.5 cm (5")	10		0.7 cm (0.3")	0.7 cm (0.3")	0.7 cm (0.3")
5		3 cm (1.2")	3 cm (1.2")	3 cm (1.2")	11		1 cm x 2 (0.4" x 5)	1 cm x 2 (0.4" x 5)	1 cm x 2 (0.4" x 5)
6		1.2 cm (0.5")	1.2 cm (0.5")	1.2 cm (0.5")	12		190 Kg (420 lbs)	190 Kg (420 lbs)	190 Kg (420 lbs)





Prior to reading these instructions for use, please check you have the latest version of this document, you can check the latest PDF version online at: [www.gordonellishealthcare.co.uk/ashby-lift-oval-toilet-raiser](http://www.gordonellishealthcare.co.uk/ashby-lift-oval-toilet-raiser)

Here you will also find other product documentation.

## Introduction

Thank you for choosing a Gordon Ellis & Co. product. Your Ashby Lift toilet raiser has been designed by our UK product design team to provide additional support for individuals who experience temporary or permanent difficulties when lowering onto or rising from a toilet. The device is intended to make daily toileting activities safer, more comfortable, and more accessible.

These Instructions for Use contain important safety information and guidance to help ensure the correct installation, use, and maintenance of your device.

Please read the entire document before first use and keep it for future reference.

If you experience any difficulty installing or using the product, or if anything in these instructions is unclear, please contact your local dealer, healthcare professional, or product provider before use.

Any serious incident that occurs in relation to this device must be reported promptly to the manufacturer and to the competent authority in your country. EU customers should also inform the local distributor or Authorised Representative.

## Device description

The Ashby Lift Toilet Raiser is a height-increasing device designed to be installed beneath a standard toilet seat. It raises the effective seating height to assist users who have difficulty lowering onto or rising from a conventional toilet.

The device is available in three variants to accommodate different toilet shapes:

- Oval (REF: 66294)
- Straight (REF: 66394)
- D-Shape (REF: 66494)

The raiser is installed using the user's existing toilet seat fixings, together with the supplied metal fixing bracket, screws, top-fix inserts, and washers. Once assembled, the Ashby Lift sits securely beneath the toilet seat and can be removed or pivoted upward for cleaning.

Each device incorporates corrosion-resistant materials, including MDPE components with brass inserts, stainless steel fixings, and non-slip bumper feet.

A maximum user weight of 190 kg (420 lbs) applies to all variants.

## Intended purpose

The Ashby Lift Toilet Raiser is intended to increase the effective seating height of a standard toilet by fitting beneath the existing toilet seat.

This added height assists users who have reduced ability to lower onto, or rise from, a toilet seat.

The device is designed for repeated daily use in indoor bathroom environments when correctly installed with the supplied fixing components.

## Indication

Use of this device is indicated for individuals who experience temporary or permanent difficulties associated with:

- reduced mobility
- reduced lower-limb or core strength
- reduced balance or stability
- reduced flexibility
- difficulty lowering onto or rising from a

standard toilet height

Suitable environments include:

- domestic bathrooms
- community and residential care settings
- healthcare facilities (e.g., hospitals, rehabilitation units)

The device may be used for short-term, long-term, or intermittent assistance, depending on the user's needs.

## Contraindication

The device should not be used in the following situations:

- Users who are unable to safely sit down (inability to sit even with aid or support).
- Users with severe balance disorders or perceptual disorders that impair safe use.
- Users who cannot briefly bear weight on their feet, even with support.
- Users with active pressure ulcers or significant skin breakdown in areas that may contact the device.
- Use with non-standard or incompatible toilet bowl designs where the fixing bracket cannot safely secure the device.
- Users who have recently undergone hip surgery, unless specifically authorised by a healthcare professional.
- Users who exceed the maximum user weight limit of 190 kg (420 lbs).



### Risk of injury

Do not use this device if you fall within the contraindications listed above

## Compliance

The manufacturer Gordon Ellis & Co. have a full quality management system accredited by the British Standards Institution to ISO 9001:2015.

## EU Declaration of Conformity

This device meets the requirements of the Medical Device Regulation 2017/745, as a Class 1 medical device. The Declaration of Conformity document can be viewed online here: [www.gordonellishealthcare.co.uk/ashby-lift-oval-toilet-raiser](http://www.gordonellishealthcare.co.uk/ashby-lift-oval-toilet-raiser)

## Device testing standards

This device has been tested and assessed in accordance with the following applicable standards:

- EN ISO 12182 - Assistive products for persons with disability
- EN ISO 14971:2019+A2:2021 – Application of risk management to medical devices

Any serious incident related to this device must be reported to the manufacturer and, where applicable, to your national competent authority.

EU customers may also report incidents to the Authorised Representative or local distributor.

## Expected service life

The expected service life of this product is **5 years** when used daily and in accordance with the correct use as outlined in these instructions.

## Storage:

Store the device indoors in a clean, dry environment between 10°C and 30°C (50°F–86°F). Avoid:

- high humidity above 60%
- direct sunlight or UV exposure
- freezing temperatures
- high heat sources (e.g., radiators)
- long-term storage in damp or unventilated areas

- If storing the device for longer than 6 months, keep it in its original packaging and inspect all components before use or re-issue.

## Limitation of liability, and customisation

The manufacturer accepts no responsibility for injury, damage, or reduced device performance resulting from any of the following:

- Modification or customisation:** Any alteration to the device, including non-approved accessories, components, or spare parts, or use that does not comply with these Instructions for Use.
- Improper or incorrect use:** Use outside the intended purpose, intended environment, or installation method described in this document, including incorrect assembly or use with incompatible toilet types.
- Normal wear and tear:** Expected deterioration arising from normal use over time, including surface marks, cosmetic changes, or material ageing.



If the device is modified, incorrectly assembled, or used contrary to these instructions, it may no longer comply with the Medical Device Regulation (MDR) and may lose its CE/UKCA conformity status.

The manufacturer is not liable for injuries or damage resulting from failure to follow the warnings, contraindications, or installation instructions provided in this document.

## Safety information and warnings

Please read and understand all instructions before installing or using this device.

If any part of these instructions is unclear, contact your dealer, healthcare professional, or product provider before use.



### Risk of serious injury or damage

- Do **not** use the device if any component appears loose, damaged, cracked, or defective.
- Do **not** install or use the device on unsuitable, unstable, or incompatible toilet designs.
- Do **not** exceed the maximum user weight of 190 kg (420 lbs).
- Do **not** attempt to repair or modify the device.
- Do **not** stack multiple raisers.
- Do **not** stand on the device.



### Risk of falling

- Check the stability of the assembled device **before each use**.
- Ensure the Ashby Lift is **fully locked into position on both sides** of the fixing bracket.
- After cleaning or repositioning, always check that the device is correctly re-installed.
- Periodically check that all fixings remain tight; re-tighten if necessary.



### Risk of injury

- Use only genuine spare parts or accessories supplied or approved by the manufacturer.
- Remove the device from use immediately if instability or unusual movement is detected.

## Risk of injury

- Ensure users with limited strength, balance, or mobility receive appropriate supervision or assistance as required.




## Additional Safety Notes

- Ensure the toilet bowl and surrounding floor area are dry and free from contamination before each use.
- If the user experiences pain, discomfort, or a change in functional ability, stop using the device and consult a healthcare professional.
- Refer to the Contraindications section for conditions where device use is not appropriate.

## Instructions, device, and label symbols


Please familiarise yourself with the symbols listed below:

**Instruction symbols:** (Image reference: 1a.)

	Important information, useful advice.
	Warning, limitation, or caution.
	Maximum user weight.

**Label symbols:** (Image reference: 1c.)

1	Unique Device Identification (UDI)
2	Manufacturer
3	Country of manufacture
4	Medical device
5	European Conformity mark
6	UK Conformity Assessed mark
7	Lot no. / production date (YY-MM-DD)
8	European Authorised Representative
9	Triman Symbol (France only)
10	European Article Number (EAN)
11	Product linear code-128
12	Product description
13	Product reference number
14	Instructions for use symbol

 Please retain the device label for future reference, especially for warranty, re-issue, service life tracking, or reporting a serious incident.

## Device components

(Image reference: 1d.)

**66294, 66394, 66494**

a	Ashby Lift Oval (66294)
b	Ashby Lift Straight (66394)
c	Ashby Lift D-Shape (66494)
d	Fixing Bracket
e	Top Fix Insert
f	Screw
g	Washer
h	Thumb Screw
i	Bumper Foot

## Assembly and installation

(Image reference 2., pg. 4 & 5.)

## Included Parts

(Image reference 2a.)

A	2 x Top-fix inserts
---	---------------------

B	2 x Screws (Pozi-head required)
C	2 x Metal washers
D	1 x Fixing bracket
E	1 x Lift moulding, 2 x Thumb screws, 4 x feet

- Remove existing toilet seat and fixings.
- Insert the top fix inserts [A], ensuring they sit flush.
- Place and align the metal bracket [D]. secure using the metal washer [C] and screw [B]. tighten until a secure fix is reached. Ensure the bracket sits centrally between fixing points.
- Fasten your existing toilet seat to the "Ashby Lift" [E] using existing fixings – Maximum allowable thread length for fixings is 6.5cm. if the thread length is longer, new fixings will need to be sourced.
- Insert the "Ashby Lift" into the bracket and slide to a suitable slot position. Position must be the same on each side.
- To adjust the position, pivot the seat.
- In its unlocked position the seat can now be moved.
- Lower the seat.
- Ensure the seat is locked and location points are the same across both sides.
- Check for stability before each use.
- The seat can be easily removed or fully pivoted for cleaning. To fully pivot, raise slightly to unlock and position in the frontmost location.








## Safety Notes (Installation and Use)

- Always check the Ashby Lift is locked equally on both sides before use.
- Periodically check all fixings for tightness; re-tighten if required.
- If the device is removed or repositioned, repeat the full installation checks before reuse.
- Discontinue use if any instability, misalignment, or unusual movement is detected.

## Technical information

**Device Symbols:** (Image reference: 1b.)

1	Product information label location
---	------------------------------------

Symbol	Description
	EU Authorised Representative
	Manufacturer
	LOT Number
	European Conformity symbol
	UK Conformity Assessed mark
	Device Reference number
	Medical device symbol

**Device Materials:** (Image reference: 1d.)

**66294, 66394, 66494**

a, b, c	MDPE, Brass Inserts
d, f, g, h	Stainless Steel
e	PP, Stainless Steel
i	TPE

This device and component parts are manufactured from corrosion-resistant materials, and do not

contain natural rubber or latex.

**Device dimensions:** (Image reference: 1e.)

#	Description
1	Overall length
2	Overall width
3	Overall height
4	Lift fixing slot width
5	Lift fixing slot distance to back of unit
6	Lift fixing slot size
7	Lift thumb screw distance to back of unit
8	Fixing plate slot width
9	Fixing plate slot distance to back of unit
10	Fixing plate slot size
11	Distance between fixing plate adjustment slots
12	Maximum user weight

## Cleaning, maintenance, re-issuing, and disposal

### Risk of contamination

- Always follow the safety instructions provided with any cleaning agent. Wear protective gloves where appropriate and ensure adequate ventilation

To maintain hygiene and preserve the condition of the device, follow only the approved cleaning guidance below.

### Do NOT use:

- abrasive cleaners
- scouring pads, wire brushes
- bleach-based, solvent-based, or highly alkaline cleaners (e.g., acetone, toluene, or strong disinfectants)

### Use only:

- mild soap
- warm water
- a neutral pH, non-abrasive disinfectant suitable for plastic and stainless steel.
- Always follow the disinfectant manufacturer's instructions.

### Avoid:

- high temperatures
- prolonged soaking
- harsh scrubbing
- exposure to steam cleaners or boiling water

Failure to follow these guidelines may lead to surface degradation, discolouration, corrosion, or compromised performance.

## Recommended Cleaning Process

### Daily Cleaning

(for general hygiene, household use):

- Wipe all surfaces with a damp cloth or sponge using mild soap and warm water.
  - The Ashby Lift can be pivoted or removed from the fixing bracket to improve access.
- Rinse thoroughly with clean water.
- Dry fully using a clean, lint-free cloth.

### Disinfection

(After contamination or for enhanced hygiene):



1. Apply a non-abrasive disinfectant suitable for plastics and metal (e.g., diluted isopropyl alcohol solution or a neutral disinfectant spray).
2. Allow the disinfectant to remain on the surface for the recommended contact time.
3. Wipe clean with a damp cloth.
4. Dry fully before reinstalling or using the device.



If the device has been used in a healthcare or clinical environment and is considered contaminated, it must be disposed of according to your region's clinical waste regulations.

#### Maintenance and Inspection Checklist:

Routine inspection should be carried out regularly and before each re-issue.

Before each use, check the following:

Component	Check For	Action if fault found
Rasier Moulding	Cracks, splits, deformation, or corrosion of inserts	Remove from use immediately and replace
Fixing bracket	Bends, distortion, looseness, or corrosion	Remove from use and replace
Overall stability	Rocking, wobbling, or uneven contact on a flat surface	Remove from use; re-align or reinstall as required
Identification label	Missing, detached, or unreadable label	Contact the manufacturer or dealer for replacement

#### Maintenance Frequency:

- Users: inspect before each use.
- Organisations (e.g., care facilities): conduct a routine inspection at least every 6 months, or according to local procedures.

Record inspection findings if required by your facility's policies.

#### Re-issuing:

This device is suitable for re-issue if the following conditions are met:



##### Before re-issue, ensure:

- A full inspection has been completed (see above).
- High-level cleaning and disinfection have been carried out in accordance with this IFU.
- No signs of cracking, corrosion, deformation, contamination, or other damage are present.



##### Do NOT re-issue if:

- Any component is damaged, worn, or corroded.
- The label or UDI is missing or unreadable.
- Non-original parts have been fitted.

Only genuine spare parts supplied or approved by the manufacturer may be used.

Ensure these Instructions for Use are provided with the device at each re-issue.

#### Disposal:

This device is manufactured from recyclable materials (primarily MDPE, stainless steel, PP, and TPE).

Dispose of the device in accordance with your local recycling or waste-management guidelines.

- Check your local authority recycling guidelines for metal goods or mixed materials
- Many recycling centres accept metal items with small plastic components.
- Separate materials where possible to aid recycling.